



adroddiad blynyddol  
annual report 2009

# The Parish of Burry Port with Pwll in the Diocese of St Davids

www.stmarysburryport.org.uk.

The Vicar	The Revd R Paul Davies	832936	plglldavies@btinternet.com
Associate Priest	The Revd Eldon Phillips	744770	reveldon@btinternet.com
<i>Honorary Assistant</i>	Very Revd Kerry Goulstone	832090	lyneth.goulstone@yahoo.co.uk
<i>Clergy</i>	The Revd Canon Alan Meats	832936	
Lay Reader	The Revd Dr Peter Bement	833905	bements@hotmail.co.uk
Lay Reader Emeritus	Anna Bement	833905	anna.bement@hotmail.co.uk
Lay Reader in Training	Len Stevens	752319	
Vicar's Warden	Graham Fisher	811327	grahamhfisher@hotmail.com
People's Warden	Trevor Sage	833449	trevor.sage@btinternet.com
Parish Administrator	Elaine Unsted	750209	elaine@unsted.com
Parish Treasurer	Elaine Unsted	750209	elaine@unsted.com
Plant Dewi Link	David Jones	833218	davidandmuriel@tiscali.co.uk
Press Officer	Romaine Perego	833751	romaine.perego@hotmail.com
Child Protection Officer	Eldon Phillips	744770	reveldon@btinternet.com
	Helen Davies	778673	helzbach24@btinternet.com

## St. Mary's

Vicar's Sub-Warden	Enfys Tanner	832015	daitanner@tiscali.co.uk
People's Sub-Warden	Glyndon Roberts	833155	
Vice Chair of Council	Cllr Pat Jones	832132	PEMJones@carmarthenshire.gov.uk
Secretary	Graham Fisher	811327	grahamfisher@hotmail.com
Treasurer	Gareth Jones	832132	
Sacristan	Janice Williams	832717	jan1935@btinternet.com
Organist	Roland Jones	834213	
Captain of the Tower	Janet Sage	835137	plglldavies@btinternet.com
Men's Fellowship	Peter Murawski	833501	annemurawski@aol.com
Mothers' Union	Glynis Sage	833449	trevor.sage@btinternet.com
Sunday Club	Louise Davies	832936	plglldavies@btinternet.com
Drama Group	Diana Bennett	773687	DBennett@carmarthenshire.gov.uk
Clerk of Works	John Kettley	832923	johnkettley@yahoo.co.uk

## St Mary's Campaign

Chairman	Paul Davies	832936	plglldavies@btinternet.com
Vice-Chairman	Ray Lewis	832581	plglldavies@btinternet.com
Treasurer	Glynis Sage	833449	Trevor.Sage@btinternet.com
Secretary	Bethan Lewis	835319	Bethansarahlewis@btinternet.com

## Holy Trinity

Vicar's Sub-Warden	Lesley Evans	774258	david.evans90@btinternet.com
People's Warden	Christine Wheeler-Jones	751596	CWheeler-Jones@stroke.org.uk
Vice Chair of Council	Jane Evans	778541	janeevans62@sky.com
Secretary	Elaine Unsted	750209	elaine@unsted.com
Treasurer	Margaret Howells	752025	margo121@talktalk.net
Organist	Jane Evans	778541	janeevans62@sky.com
Organist	Elaine Unsted	750209	elaine@unsted.com
Mothers' Union	Margaret Howells	752025	margo121@talktalk.net
Sunday School	Helen Davies	778673	helzbach24@btinternet.com
Knit and Natter	Caroline Saunders	749718	
Speakers Forum	Monroe Walters	832936	mjdwalters@talktalk.net

# Vicar's Report for the Year Ending 31 December 2009



2009 has been a good year and I have many hugely positive aspects of parish life to report upon. Once again, I set out my report using the framework of the mission statement I spoke about in my inaugural sermon...to worship God, to build his Church, to love his World...

## **1) To Worship God**

Following changes made to the Sunday pattern of services in 2007, I feel that the parish has now settled down to a rhythm of worship that provides a regular heartbeat to our common life. The concept of a principal Eucharist in both churches at the same time each Sunday is a sound one and I feel we are seeing its benefits. The 9am Pwll Eucharist has seen the most numerical growth of any service in the parish. The 10.30am Parish Eucharist in St Marys is growing slowly. I am convinced that work to the building will help to encourage this.

The 6pm Sunday Evensong in St Marys has seen some decline this year. We have lost some stalwarts through illness and death and they have not been replaced. The fortnightly 8am Communion in St Marys on the 1st and 3rd Sundays and the fortnightly 5pm Evensong in Pwll on 2nd and 4th Sundays have continued to provide for those who appreciate these services. The Midweek Eucharist in St Marys at 10.15am on a Wednesday flourishes – how patterns change – the books show that in the 1970s numbers were very poor at this!

In addition to our regular worship, there have been many special celebrations this year. The services at Epiphany, Candlemas, the Dramatized Stations of the Cross, the Healing Eucharist and the celebration of All Saints were but a few highlights. It was a great delight to welcome Bishop Wyn on 12 July to confirm Nicole Etherington, Ross Etherington, Neville Henly, Jordan Howells, Joshua Howells, Susan Howells, Sophie Maliphant, Noa Radford, Carys Rees and Efa Williams as well as rededicate the restored peal of bells in St Marys.

The number of christenings, weddings and funerals continue to rise as the parish population increases to make us the largest single parish in the Diocese. Whilst many funerals do take place in church, the clergy are increasingly called upon to take a large number of services in the crematorium / cemetery. We have staged many community services again this year; amongst them the Mayor's service and the Lifeboat service as well as the hugely popular *Light up a Life* – our thanks once again to our close friends at Eric James for their part in this.

As well as our worship on a parish level, I am grateful to Anna and Peter Bement for setting up a homegroup in Burry Port at the beginning of 2009. The homegroup is an opportunity for a smaller number of people to meet in the warmth of a home for some simple Bible study and fellowship. It is a good way of supporting each other in being more disciplined in our reading and studying of Scripture as well as enjoying fellowship. It is very unthreatening and you don't have to have any knowledge of the Bible or theology or anything!

## 2) To Build his Church

As Candlemas reminds us, church is about people not buildings and one of the joys of 2009 was witnessing the development of lay ministry in many forms. In terms of licensed ministries, it was a delight to witness the licencing of Elaine Unsted as our first Pastoral Eucharistic Assistant by Bishop Wyn on 12 July. It has also been very exciting for us to be alongside Graham Fisher as he begins his training as a Lay Reader. Both have done extremely well. It has also been a joy to welcome Michael Wheatley from Llandeilo as a placement ordinand in the parish.

Whilst I do all that I can to encourage and resource growth in every aspect, a huge amount of my time in 2009 has been taken up by our buildings – primarily St Marys. In acknowledgement of this, Holy Trinity has not been neglected! The insertion of a kitchen into the back vestry has been a hugely welcome addition to our facilities at Pwll. Not only does it make coffee after worship so much easier but it also enables more flexible use of the building. Huge thanks to Gordon and Margaret Howells for donating it and Peter and Elaine Unsted for fitting it.

### St Mary's Campaign

Following the launch of the two year Campaign to restore and reorder St Marys in September 2008, a huge amount has been achieved. Last years report celebrated the end of major restoration – a huge feat in just four months. 2009 has been focussed on fundraising and planning for the new 'Narthex' at the west end of the Nave (Narthex is from an old Greek word  $\eta\alpha\theta\epsilon\kappa\varsigma$  meaning 'a railed off antechamber at the western entrance of some early Christian churches'). For the record, 2009 has achieved the following:

- The raising of nearly £100,000 within the church and community
- The securing of a grant of £25,000 from Carmarthenshire County Council
- Further consultation and information evenings within the community
- The appointment of Caroe & Partners of Llandaff as our architects
- The consolidation of initial drawings for faculty application
- The granting of a faculty for the work by the Diocesan Chancellor
- The granting of planning permission for a new entrance by Carmarthen County Council
- Survey of existing foundations and walls for new structure
- The appointment of Mann Williams (Cardiff) as Structural Engineers
- The appointment of Press & Starkey (Hemel Hempstead) as QS / CDM
- The appointment of Hicks Tittle (Bridgend) as Mechanical & Electrical Engineers
- Completion of all working drawings ready for tender process

In short, against all expectations, we achieved all our aims in 2009. We now need the remainder of the money to allow the project to proceed. It is hoped that we will be match funded by the Welsh Assembly's *Community Facilities and Activities Programme*. Following the submission of a very comprehensive application in October, I am expecting to hear the outcome soon. My enormous thanks go to our patrons, Michael Bunker, Ray Lewis my vice-chair, Glynis Sage our treasurer, the Executive and each one of you for your generous support of the Campaign.

## **Finance**

In 2007, after my first year in the parish, I reported that, for the first time, the parish had failed to raise its Ministry Share (Quota). This is the amount that we have to pay the Diocese for our contribution to the cost of Ministry. Clearly, the ministry of the church cannot continue without being properly funded and I am delighted that in 2009 we just broke even! I am hugely grateful to all of you for your generosity through your weekly giving. Our Ministry Share in 2010 is £44,000. This amounts to about £210 each. Please use gift aid if you are a UK taxpayer.

Clearly, the development of lay ministry, the resourcing of our church buildings and establishing financial stability is all about laying a solid foundation at the beginning of a new century to see the Parish of Burry Port with Pwll continue and grow in the future. There are many other issues that will need addressing in time, but at this time our plate is full with these projects. Please remember the Campaign in your prayers as we enter its final year that it will continue to flourish and provide us with a building that will make St Marys the heart of life in Burry Port.

### **3) To Love His World**

On December 3rd, I received a letter of thanks from the Burry Port Lifeboat for the Lifeboat service and the donation that we gave them this year. The letter said and I quote "The members of St Marys are the backbone of present day society and the salt of the earth". I was moved when I read this and I continue to be constantly impressed by the Christian love and care that is shared within our community and which overflows out of the church doors into the parish. It is tangible and I am very proud to be a part of this community of faith.

It would, however, be good to build on this part of our mission and make it more of a priority after the completion of the Campaign. We live in the midst of a community with enormous problems. I am becoming more and more aware of the massive drug problem on our own doorstep; the need for greater input into the lives of so many young people; the large number struggling with mental health and the lack of support for them; families struggling with issues of marital relationships and debt alongside so many other problems.

### **4) Parish Life**

All this work, of course takes place in the context of another busy year for all the organisations in the parish: the two branches of the Mothers' Union; the St Mary's Men's Fellowship; the St Mary's Drama Group, the St Mary's Church Choir and the two superb Sunday Schools in the parish (largely run by very talented teachers who could do with a break at the weekend!). I know that many are enjoying the two new groups; Speaker's Forum (thanks to Monro Walters) and Knit and Natter (thanks to Caroline Saunders).

In addition to all the hard work that I witness in our parish, one of our newcomers this year remarked that we know how to enjoy ourselves! This is certainly true and we have had many delightful social events throughout the year: the Cawl a Chân; the Hi de Hi Night (thanks to Enfys and Peter); the Pwll BBQ (thanks to Christine and Edward); the Harvest Supper in Pwll (I was in pain after all the laughter!) and the production of Snow White and the Seven Dwarfs to a full house at the Memorial Hall on 2 December.

Finally, my heartfelt thanks to my fellow clergy: Eldon, Kerry (and our hearty congratulations to him on celebrating 50 years of ministry this year), Peter and Alan. It was also good to welcome Fr Richard and Menai Jenkins to the parish this year after retiring from Ferryside. We wish them a happy retirement with us. My thanks to our readers, churchwardens, musicians, secretaries, treasurers, Sunday School teachers, cleaners and to each of you for your faithfulness and generosity. In the words of St Paul, I constantly give thanks to God for all of you.

I end my report by remembering parishioners and friends who have entered into their rest during 2009; Michael Leslie Jones, Elsie John, Peter Donaldson, Ethel Mair Llywela Burge, (we will be dedicating a lectern in memory of Wela in the near future), Catherine Louise Rees-Jones, Betty Doreen Davies, Philip Morgan Harries, Muriel Ena Roberts, Margot Pauline Davies, David Cedric Bonnell. We give thanks to God for them and pray that they may rest in Christ to whom be glory in 2010 and for eternity.



R Paul Davies BA MTh  
*Vicar of Burry Port with Pwll*

### Statistics for 2009

	<b>SM</b>	<b>HT</b>	<b>Both</b>
Number of People on the Electoral Roll of the Parish	103	59	162
Number of Easter Communicants (12 April 2009)	93	51	144
Number of Pentecost Communicants (31 May 2009)	75	0	75
Number of Communicants on Trinity III (23 June 2009)	42	38	80
Number of Christmas Communicants (25 December 2009)	123	63	186
Average Sunday Attendance in the Parish	82	41	123
Number of Children in Sunday School / Sunday Club	18	10	28
Number of Baptisms in the Parish	19	0	19
Number of Confirmations in the Parish	4	6	10
Number of Weddings in the Parish	8	1	9
Number of Funerals (held in Church) in the Parish	13	5	34

## Diary Dates for 2010

March	08 Evening Meal at Dhaka 2 Bombay, Pembrey: 7 for 7.30pm
	19 Pwll Church Jumble Sale in Holy Trinity Church Hall, Pwll: 5.00pm
	21 Pwll Church Sub-Council after 9am Eucharist in Holy Trinity
April	04 FEAST OF THE RESURRECTION: EASTER DAY
	11 Pwll Church AGM (Easter Vestry) after the 9am Eucharist in Holy Trinity
	11 Burry Port Church AGM (Easter Vestry) after 6pm Compline in St Marys
	11 PARISH AGM & EASTER VESTRY IN ST MARYS: 7.15pm
	18 Sunday Lunch at Shoreline Park in aid of St Mary's Campaign: 12.30pm
	18 Archidiaconal Taize Service in St Mary's: 6.00pm
May	15 Burry Port Church Summer Fayre in Grounds of St Mary's: 2.00pm
	23 PENTECOST: Deanery Celebration (Only 8.00am service in parish)
June	11 Campaign Fundraising Family Hi De Hi Evening in the British Legion: 6.00pm
	26 Pwll Church Summer Fete in Holy Trinity Church: 2.00pm
	26 Ordination of Michael Wheatley as a Deacon in St Davids Cathedral: 10.30am
	27 United Eucharist in St Mary's to welcome our new Assistant Curate: 10.30am
July	04 Burry Port Church Sub-Council Meeting in St Mary's after Evensong: 6.00pm
	08 Pwll Church Sub-Council Meeting in Holy Trinity: 7.30pm
	17 Parish Sponsored Walk starting from St Marys: 2.00pm
	19 PCC Meeting in Holy Trinity: 7.30pm
August	07 Pwll Church Summer BBQ in 9 Tirwaun, Pwll: 5.00pm
September	10 Pwll Church Jumble Sale in Holy Trinity Church Hall, Pwll: 5.00pm
	11 Choir & St Mary's trip to Hereford: Departing St Mary's by Coach at 8.30am
	26 Harvest Sunday in Pwll
	28 Pwll Church Harvest Supper in Holy Trinity Hall: 7.00pm
October	03 Harvest Sunday in Burry Port
	11 Burry Port Sub-Council Meeting in the Leslie Griffiths Centre: 7.30pm
	13 Burry Port Vicar's Mystery Trip leaves St Mary's: 6.30pm
	14 Speaker's Forum in the Ashburnham Golf Club: 7.00pm
	17 Pwll Church Sub-Council Meeting in Holy Trinity after the 9am Eucharist
	18 PCC Meeting in Holy Trinity: 7.30pm
	21 Burry Port Church Harvest Supper in the Ashburnham Hotel: 7.00pm
November	11 Speakers Forum in the Ashburnham Golf Club: 7.00pm
	19 Pwll Church Pre-Christmas Fayre in Holy Trinity Hall: 6.00pm
December	01 St Mary's Drama Group Pantomime in Burry Port Memorial Hall: 7.00pm
	02 Light up a Life Service in St Mary's: 7.30pm
	05 Parish Eucharist and Christmas Lunch in the Ashburnham Hotel: 12.30pm
	08 Burry Port MU & MF: Respective Christmas Dinners
	09 Speakers Forum in the Ashburnham Golf Club: 7.00pm

# St Mary's Parish Church Accounts 1 January to 31 December 2009

## 1 Vicar & Churchwardens Account (Gareth Jones)

### **Income**

Opening Balance	£11,991.12
Envelopes	£21,349.00
Loose change	£2,167.08
Passion Play	£110.03
Home Com/Plas y Mor	£314.96
Standing Orders	£1,724.50
Wedding Fees	£2,390.40
Baptism Donations	£471.59
Funeral Fees	£980.00
Gify Aid	£9,578.21
Holy Trinity	£81.64
Hayes and Finch	£62.38
Burry Port CP School	£50.00

**£51,320.89**

### **Expenditure**

Wafers	£168.10
Communion Wine	£31.98
Oil	£546.53
Electricity	£244.97
Ministry Share	£27,547.12
Parochial Fees	£2,604.00
Funeral/Wedding Disbursement	£918.50
Music	£414.00
Insurance	£1,885.13
Electrical Work	£520.95
Honorariums	£130.00
Oasis	£26.00
Welsh Water	£107.19
Church Finance Supplies	£244.92
New Mower/Mower Repairs	£410.68
Church in Wales	£15.30
Confirmation Resources	£35.00
Boiler Service/Repair	£368.50
Campaign transfer	£6,910.46
Donations B. Legion/RNLI	£100.00
Christmas Tree	£40.00
Stationery /Printing	£153.62
Incidentals	£85.77
Brought forward	£8,380.17

**£51,888.89**

Expenditure over Income                      £568.00

## 2 Deposit Bond 3 months fixed plus Money Manager Account (Gareth Jones)

### **Income**

Coffee Mornings Mrs J Williams	£519.28
Interest	£981.67
Parish Diaries	£29.00
Bond Maturity	£50,236.85
Balance Brought Forward	£114,107.06
	£165,873.86

**Total Balance                                      £55,873.86**

### **Expenditure**

Transfer to Campaign	£60,000.00
Purchase of Bond	£50,000.00

**£110,000.00**

### 3 Plant Dewi Fund (Romaine Perego)

Money Raised during 1 January - 31 December 2009 (Parish Total)

**£769.54**

### 4 St Mary's Church Sunday Club (Louise Davies)

#### **Income**

Opening Balance                      £276.42

**Total                                      £00.00**

**Closing Balance                      £26.44**

#### **Expenditure**

Christmas Party                      £36.00

Stationery and Storage              £84.94

Art Materials                         £78.25

Children's Bible                      £4.99

Christmas Party                      £45.80

**Total                                      £ 249.98**

### 5 St Mary's Sunday School Savings Bank (Janet Sage)

Withdrawn by members 13 November 2009

£61,981.00

Balance in Account

2,893.95

Interest

38.99

**Total**

**£2,932.94**



NB Please note after hours of research, Vicar Paul has ordered a new central heating system for St Marys which he is convinced will be 100% effective. It is hoped that it will be functional by 2018.

# Holy Trinity Church Pwll Accounts 1 January to 31 December 2009

## 1 Vicar and Churchwarden Account (Margaret Howells)

<i>Income</i>		<i>Expenditure</i>	
Envelopes	£13,509.00	Parochial Fees	£1,384.00
Cash	£720.40	Church Electric	£157.49
Donations	£343.00	Hall Electric	£122.65
CMS Boxes	£40.66	Gas	£447.33
Wayleaf	£12.21	Church Insurance	£665.00
Hire of Hall	£165.00	Hall Insurance	£559.63
Sale of cards	£235.00	Water Rates	£249.16
Tea/Coffee	£9.35	Ministry Share	£13,773.52
Rural Council	£100.10	Wafers/candles	£32.04
Cans	£22.00	New Ladder	£62.98
Africa Appeal	£295.00	New Boiler	£86.25
Annual Raffle	£728.00	Miscellaneous	£84.91
Harvest Supper	£289.00	Service Fire Extinguishers	£43.13
Christmas Fayre	£1,251.46	CMS Boxes	£40.66
Sale of Holly Wreaths	£50.00	Africa Appeal	£312.00
In lieu cards	£19.00	Fitting Kitchen	£138.94
100 club	£540.00	Confirmation items	£94.46
Jumble Sales	£380.50	Church Envelopes	£81.64
Masala Evening	£275.00	100 club	£260.00
Summer Fete	£1,025.50	Communion Wine	£32.16
BBQ (Christine Wheeler-Jones)	£430.00	Wedding Disbursements	£138.00
Gift Aid	£4,520.01	Wedding Organist	£40.00
Weddings Fees	£143.60	Honarium/Clergy	£100.00
Funeral Fees	£155.00	Christmas tree	£35.00
Bond Interest	£1,584.78		
<b>Total</b>	<b>£26,843.57</b>		<b>£18,940.95</b>

Bond £28,000 reinvested	
Balance in bank 31 December 2008	£3,201.77
Income	£26,843.57
	£30,045.34
Expenditure	£18,940.95
Balance in Bank 31st December 2009	£11,104.39

## 2 Money Master Account

Balance in bank 31 Dec 08	<b>£6,691.17</b>
Interest	£5.18
	<b>6,696.35</b>

### 3 Churchyard Account

#### **Income**

CY Maintenance	£500.00
Burials/Ashes	£849.00

Expenditure	£1,349.00
Balance in bank 31 Dec 2008	<b>£1,956.90</b>

Income	£1,349.00
	£3,305.90
Expenditure	£2,218.44
	<b>£1,087.46</b>

#### **Expenditure**

Hand Rail	1,040.00
Maintenance	£700.00
Extending Parking	£460.00
Weed Killer	£11.24
Stamps	£7.20
	<b>2,218.44</b>

### 4 Sunday School Account (Helen Davies)

#### **Income**

Collections	£172.50
Interest (LTSB)	£3.24
Sale of Christmas cards	£21.50
Donation Mrs D Hovard	£10.00
Interest (SSBk)	£190.00

**£397.24**

#### **Expenditure**

Stationery	12.45
Photocopying	£5.35
Computer Ink	£67.96
Easter Eggs	£10.00
Altar flowers for Easter	£10.00
Christingle Expenses	£59.65
Christmas Presents	£64.84
Christmas card resources	£29.92
Flowers - Mothering Sunday	£15.00

**£275.17**

Balance in Bank 1 January 2008	£332.17
Income	£397.24
	729.41
Expenditure	275.17
Balance in Bank 31 December 2008	<b>454.24</b>

### **Parish Easter Vestry Meetings (AGMs) on Sunday 11 April 2010**

Pwll Church: After the 9am Eucharist in Holy Trinity  
Burry Port Church: After Compline at 6.00pm in St Mary's  
Parish Easter Vestry: 7.15pm in St Mary's, Burry Port

# Burry Port with Pwll Parochial Fund:1 January - 31 December 2009

## Income

Opening Balance in HSBC	£723.64
St Marys	£2,448.00
Holy Trinity	£1,228.00
St Mary's (Annual Report)	£156.00
Holy Trinity (Annual Report)	£156.00
Interest from Sale of Parsonage	£787.20
Gross interest for year	1.94

**Total** **£5,500.78**

## Expenditure

Welsh Water	£525.16
Vicar's Expenses	£3,675.00*
Associate Priests Expenses	£283.20
Printing Annual Report	£212.50
Cin W Publications	£31.50
Carms C C (Lottery Licence)	£20.00
Clive Davies Design	£100.00
Balance in HSBC	£653.42

**Total** **£5,500.78**

\*Underpayment in Vicar's Expenses for the year £1256.96

## Investment Income from the Sale of Pwll Parsonage (David Jones)

### Income

Opening balance in HSBC	£0.24
Bond Maturity	£16,000.00
Interest from Deposit Bond	£787.20

**Total** **£16,787.44**

### Expenditure

Trans to Current A/C	£787.20
Closing Balance in HSBC	£16,000.24

**Total** **£16,787.44**

## Report of the Examiners

I have examined the Financial Statement for the year 31 December 2009.

In my opinion, the Financial Statement shows a true and fair view of the state of affairs of the Church and is in accordance with records that I have examined and explanations that have been given to me.



Mr A Jones (St Mary's, Holy Trinity and Parish Accounts)



Mr A P Rowlands  
(Holy Trinity Sunday School)

## Contributions for the year 2009

### ST MARY'S

Ardwyn	Mr I. Hughes	52	£ 130.00
Broderi	Mrs Y. Thomas (GA)	Rozel	£ 61.50
Bryn Gwdig	Mrs M. Bennett (GA)	17	£ 117.90
Cae Ffwrnnes	The Vicar & Mrs Davies (GA)	Vicarage	£ 1,025.60
Cae Dolau	Mr & Mrs E.S.J. James (GA)	9	£ 262.80
Church Road	Mr & Mrs D.S. Rees (GA)	39	£ 233.33
	Mr S Rees	39	£ 96.00
Colby Road	Mrs M. Lewis	15	£ 214.00
	Mrs M. Griffiths	30	£ 170.00
	Mr & Mrs A.G. Landeryou	39	£ 215.50
Cwm Ifor Road	Mrs D. Evans (GA)	c/o Rhandir Delyn	£ 12.80
	Mrs M. Wenman (GA)	Rhandir Delyn	£ 183.30
Dol y Coed	Mr & Mrs D. Tanner (GA)	4	£ 384.60
	Mr & Mrs P. Murawski (GA)	6	£ 139.65
Dolau Fan	Mrs S.V.E. Richards	9B	£ 156.50
	Mr & Mrs G Jones (GA)	18	£ 248.00
	The Revd & Mrs J. Ablett (GA)	22	£ 69.12
	Mr L.T. Owen	28	£ 130.00
	Mrs G. Jones	41	£ 37.00
	Mr & Mrs W.J. Lawson (GA)	54	£ 175.60
	Mrs H. Davies	64	£ 153.00
	Mr EW Evans (GA)	67	£ 192.30
	Mr & Mrs D.E. Francis (GA)	70	£ 357.00
	Mrs J Williams (GA)	74	£ 432.00
	Miss E.B. Lewis (GA)	79	£ 294.80
	Mrs M Griffiths (GA)	80	£ 94.80
	Mrs H. Jones	83	£ 39.00
	Mrs J.E. Croombes (GA)	108	£ 145.80
	Mrs D. James (GA)	110	£ 173.00
	Mr & Mrs S.C Griffiths (GA)	165	£ 357.60
Dwynant	Mrs C.W. Jones	5	£ 100.00
Dyfatty Terrace	Mrs E. Harper	4	£ 213.00
	Mr & Mrs K. Taylor	7	£ 183.00
Dyffryn	Mr & Mrs H. Morgan (GA)	3	£ 5.10
	Miss S Morgan	3	£ 1.00
	Mr G Morgan (GA)	21	£ 2.56
	Mr D.M.L. Howells (GA)	25	£ 76.90
Elkington Road	Mr & Mrs T.J. Williams	18	£ 422.00
	Mrs J. Williams (GA)	36	£ 46.10
	Mr D.P. Francis (GA)	56	£ 346.10
	Mrs E Rees	72	£ 51.00
	Mr & Mrs M D Harries	76	£ 144.00
	Mr & Mrs J M Lowe	103	£ 80.00
	Miss S.M. James (GA)	109	£ 34.60
	Mr T.E. Land (GA)	112	£ 128.00

	Mrs P. Davies (GA)	113	£ 339.70
	Mrs S. Vaile	115	£ 5.00
	Mrs P. Davies (GA)	149	£ 95.60
Elkington Park	Mrs L.M. Brian	3	£ 60.00
	Mrs D. Bennett (GA)	3	£ 207.60
	Mr A.J. Bennett	3	£ 56.00
Ger Yr Ysgol	Mrs J. Lewis	2	£ 18.00
	Mrs G.Gibson	8	£ 275.00
Glanmor Terrace	Mrs N. Rowlands	6	£ 300.00
	Mrs R. Davies	14A	£ 46.50
Glanwern	Miss A Armstrong	5	£ 104.00
Golwg y Tywyn	Mrs L. Williams (GA)	16	£ 25.60
Gors Road	Mrs P.A. Thomas (GA)	30	£ 313.46
	Mrs J.M. Reohorn (GA)	40	£ 32.00
Graig	Mrs B. Rees (GA)	Windy Nook	£ 153.80
	Mrs J. Williams (GA)	Bryneithin	£ 255.10
	Mr & Mrs R. Lewis (GA)	Tegfan	£ 288.40
	Miss E. Lewis (GA)	c/o Tegfan	£ 294.80
	Mr & Mrs A. Rees-Jones (GA)	Cemaes	£ 397.40
Gwscwm Road	Mr G. Price (GA)	59	£ 89.70
Gwscwm Park	Mrs M. Charles (GA)	7	£ 136.50
Heol y Felin	Mrs J. Thomas	2	£ 83.00
	Mr & Mrs G. Thomas (GA)	5	£ 43.50
Heol Elisabeth	Mr & Mrs T.A. Phillips (GA)	20	£ 248.71
	Mr P.E. Phillips (GA)	c/o 20	£ 157.69
Heol Gwendth	Mrs E Williams	5	£ 30.00
Heol Vaughan	Mrs B. Slade	1	£ 120.00
Isfryn Close	Mr & Mrs J. Kettley (GA)	5	£ 743.50
Mansel Street	Mr G. Thomas	42	£ 132.00
	Miss N.V. Brazell (GA)	44	£ 217.90
New Street	Mr & Mrs J Rogers (GA)	43	£ 217.94
	Mr & Mrs J. Elliott (GA)	49	£ 178.20
	Mrs O. Roberts	82	£ 167.00
	Mrs A. Williams	85	£ 25.00
Parc Tyisha	Mr & Mrs E.J. James (GA)	19	£ 124.30
	Mr & Mrs T. Sage (GA)	21	£ 814.10
	Mr R.D. Sage (GA)	21	£ 194.80
	Mrs K.L. Helliwell (GA)	21	£ 194.80
	Mr A. Francis (GA)	35	£ 158.90
	Miss M Ward	47	£ 30.00
	Canon & Mrs A J Meats (GA)	77	£ 220.50
Park Terrace	Mrs H. Morgan	25	£ 30.00
Pemberton Ave	Mrs R. Morgan (GA)	25	£ 228.20
Pencoed Road	Mr & Mrs DW Morgan (GA)	37	£ 265.30
	Miss J.R. Sage (GA)	50	£ 183.30
	Mrs C. Hartley (GA)	59	£ 66.60
	Mrs F.V. Charles	72	£ 156.60
	Mr & Mrs K.M. Lewis (GA)	141	£ 243.50
Pinetree Close	Mrs J Richards (GA)	5	£ 55.76

Plas Newydd	Mrs B.P. Perry (GA)	6	£ 135.80
Plas y Mor	Mrs P. Donaldson (GA)	1	£ 24.80
	Mr & Mrs D. Davies	9	£ 43.00
	Mrs V. Bonnell	10	£ 220.00
	Mr & Mrs R. Wells	22	£ 55.00
	Mrs H. Thomas	24	£ 99.00
	Frau E Schaub		£ 81.60
	Mr & Mrs J.O. Williams (GA)	32	£ 142.30
Pwll Road	Mr & Mrs R. Aston	The Grange	£ 80.00
	Mr & Mrs K. John	c/o The Grange	£ 80.30
	Mrs M. Thomas (GA)	New Lodge	£ 128.00
	Mr MH Thomas (GA)	New Lodge	£ 128.00
Riverside Cott.	Ms. C. Thomas (GA)	2	£ 419.20
St Mary's Rise	Mr M. Morris (GA)	11	£ 25.15
	Mr & Mrs W.A. Morris (GA)	11	£ 80.05
	Mrs L. Rogers (GA)	c/o 15	£ 47.43
	Mrs S. Davies (GA)	c/o 15	£ 44.80
	Mr & Mrs H.V. Evans (GA)	15	£ 306.40
	Mrs H.F. Howells (GA)	24	£ 148.07
	Miss M.E. Evans (GA)	27	£ 128.00
	Mrs B. Jones	31	£ 35.00
	Mr & Mrs J. Edwards (GA)	40	£ 92.30
	Miss M. Roberts (GA)	c/o 44	£ 6.40
	Mrs L Evans	c/o 44	£ 2.00
	Mr & Mrs W.G. Roberts (GA)	44	£ 508.97
Sandfield Road	Mr & Mrs R Owen (GA)	3	£ 211.50
	Mr E. Nicholson	7	£ 141.70
	Mrs E. Evans (GA)	19	£ 335.80
	Mrs E. Halls	23	£ 219.50
	Mrs H. Lewis	24	£ 89.00
Springfield Terr.	Mrs T. Roberts (GA)	18	£ 6.40
Stepney Road	Mrs MMY Harries(GA)	136	£ 351.20
	Mrs B.Y. James	140	£ 178.00
Sussex Road	Mrs E.M. Gaches (GA)	Lon Las	£ 224.30
	Mr & Mrs R.J. Hire (GA)	8	£ 311.53
	Mr & Mrs N. Wakefield (GA)	Homestead	£ 173.00
Tan Y Bryn	Mrs E. Lewis	37	£ 340.00
	Mrs C M Thomas	19	£ 245.00
	Mrs A.C.M. John	78	£ 50.00
Tan y Coed	Mr & Mrs B.V. Haebe	2	£ 105.00
	Mrs J.A. Griffiths	23	£ 50.00
	Mrs M Morgans (GA)	32	£ 67.90
The Cliff	Mrs R. Perego (GA)	1A	£ 378.80
The Crescent	Mr & Mrs A Radford (GA)	17	£ 82.00
	Mrs A.G. Evans	24	£ 128.30
Trem Y Mynydd	Mrs S. Jordan (GA)	2	£ 92.30
Tyle Teg	Mr & Mrs G.F. Thomas (GA)	11	£ 224.30
	Mr & Mrs M.A. James (GA)	17	£ 28.20
	Mrs S. George (GA)	c/o 17	£ 12.80

	Mr & Mrs D. Kavanagh	35	£ 65.00
	Mr R. Jones (GA)	41	£ 228.20
	Miss E.C. John	43	£ 18.00
	Mr & Mrs T.A. John	43	£ 68.00
	Mr & Mrs D. Pimlott	54	£ 20.00
	Mr & Mrs D.G.J. Jones (GA)	61	£ 229.40
	Ms C Owen (GA)	c/o 61	£ 22.40
	Mrs V. Thomas	75	£ 80.00
Woodbrook Terr	Mrs A. Nurse	9	£ 240.00
Y Dderwydd	Mrs F. Atkinson (GA)	Roma House	£ 132.00
	Mr K. James (GA)	Dderwydd	£ 79.40
Y Rhodfa	Mrs M. Perrott-Owen (GA)	15	£ 25.60
PEMBREY	Mrs J. Davies (GA)	9 Ar y Bryn	£ 120.50
Danlan Park	Mrs M. Davies	7	£ 90.00
Glanaber	Mr & Mrs F.H.J. Davies	8	£ 315.00
Maes y Capel	Mr & Mrs T.A. Peters	74	£ 82.00
St Illtyd's Rise	Mr & Mrs D. Howells (GA)	2	£ 153.80
Waun Sidan	Mrs L Jones	11	£ 51.00
LLANGENNECH	Mr & Mrs R Williams (GA)	55 Parc Morlais	£ 6.40
LLANELLI	Mrs R. Thomas	39 Parc H Av	£ 205.00
Sandpiper Road	Mrs K.L. Davies (GA)	30	£ 30.00
Roland Avenue	Mrs E. Goodridge (GA)	6	£ 7.60
TRIMSARAN	Mr G. Fisher (GA)	56 Trilwm	£ 79.40
	Anonymous Contributions		£ 1,463.05
			<b>£ 27,880.97</b>

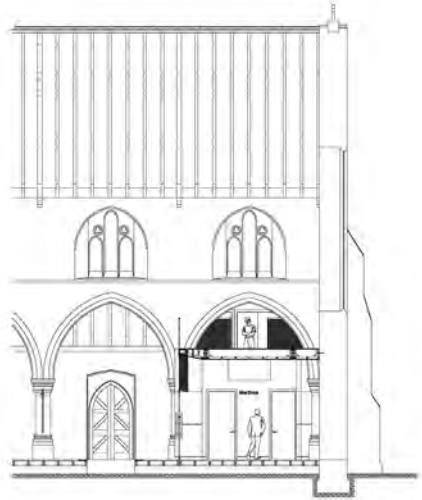
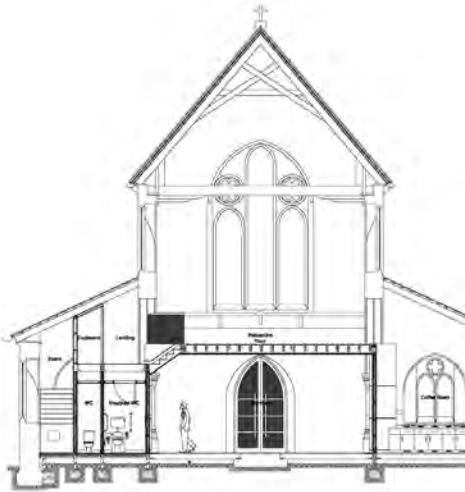
## HOLY TRINITY

Bassett Terrace	Mr & Mrs A. Jones (GA)	11	£ 108.97
	Mrs P. Stephens	21	£ 247.00
	Mrs H Davies	24	£ 25.00
	Mr & Mrs G. John (GA)	25	£ 187.17
	Mrs K. Kinzett	c/o 25	£ 52.00
Beechgrove	Mr & Mrs R Thomas (GA)	14	£ 44.48
Elgin Road	Mrs D. Lloyd	4	£ 193.00
	Mrs C Williams	19	£ 25.64
	Mrs A. Roberts (GA)	27	£ 291.66
	Miss J. Davies (GA)	c/o 25	£ 487.17
	Mrs E Brown (GA)	46	£ 260.32
	Mrs E. Unsted (GA)	30	£ 325.64
	Mrs J. Evans (GA)	62	£ 393.58
	Mr & Mrs G Thomas (GA)	67A	£ 915.38
	Mr & Mrs C. Green (GA)	69	£ 175.64
	Mr & Mrs I Thomas (GA)	92	£ 346.41
Ger y Coed	Mrs P Walters	11	£ 285.00
	Mr P Walters (GA)	c/o 11	£ 358.97
Glascoed	Mr & Mrs P. Samuel (GA)	19	£ 236.66
	Mr & Mrs L. Stevens	21	£ 268.00
Maesyrfhaf	Mrs B. Davies (deceased)	4	£ 44.00

	Mrs W Edwards (GA)	17	£ 250.51
	Mrs P Edwards (GA)	41	£ 305.25
Penllech	Mrs A. Bower	8	£ 310.00
	Mr T. Davies	24	£ 51.55
	Mr & Mrs M Walters	Ocean View	£ 374.35
	Mrs H. Etherington (GA)	Bryndir	£ 167.05
Pwll Road	Mrs H. Rees	2	£ 33.70
	Mrs T. Williams	c/o 2	£ 14.45
	Mrs K Evans	9	£ 67.94
	Miss C.E. Saunders (GA)	21	£ 52.17
	Mrs M. Bonnell	105	£ 150.00
	Mr N Henley	8	£ 335.89
Sandy Road	Mrs M. Williams	170	£ 107.00
Stepney Road	Mrs J. Peregrine	3	£ 255.00
	Mr & Mrs G. Howells	21	£ 372.00
	Mr & Mrs S. John (GA)	26	£ 91.00
	Mrs J. Iberson (The Nurseries)	7	£ 88.50
Stradey Hill	Mr & Mrs U Stein (GA)	10a	£ 782.05
	Mrs B Torry (GA)	12	£ 383.33
Tirwaun	Mrs C. Wheeler-Jones (GA)	9	£ 352.56
	Mr E Wheeler Jones (GA)	9	£ 42.94
	Mrs O. Williams (GA)	10	£ 388.46
Wauneos	Mr L Richards (GA)	4	£ 346.15
	Miss C. Richards	c/o 4	£ 55.00
	Mr & Mrs M Williams (GA)	10	£ 398.71
Other:	Mrs M James, Caemaen		£ 100.00
	Miss P. Ling, 25 Penwern		£ 180.00
	Mr & Mrs W Evans, 108 Sandpiper (GA)		£ 364.51
	Mrs A. Howells, Swiss Valley		£ 15.00
	Mrs D Hovard, Bicester		£ 435.89
	Mrs B. White, 9 Dyffryn, Burry Port (GA)		£ 226.92
	Mr & Mrs A. Howells, 2 Roland Ave (GA)		£ 321.79
	Mrs G Daniels, Dolau Fan (GA)		£ 285.89
	Mrs J Williams, Graig (GA)		£ 6.41
	Mrs Olive Jones, Plas y Mor		£ 15.00
	Mr N Thomas, Bryn (GA)		£ 153.20
	Mrs D Bowen, The Mariners (GA)		£ 80.76
	The Revd & Mrs J.E. Phillips (GA)		£ 455.12
	The Very Revd & Mrs T.R.K. Goulstone (GA)		£ 692.30
	The Revd Canon & Mrs A.J. Meats (GA)		£ 225.64
	Mr A Brace, Sandfield Road		£ 105.00
	Mr & Mrs D Duggins, Llangennech (GA)		£ 172.88
	Anonymous Contributions		£ 1,240.62
	<b>Total</b>		<b>£ 16,137.68</b>

# The Narthex @ St Mary's Final Designs

Caroe &  
Partners  
Architects

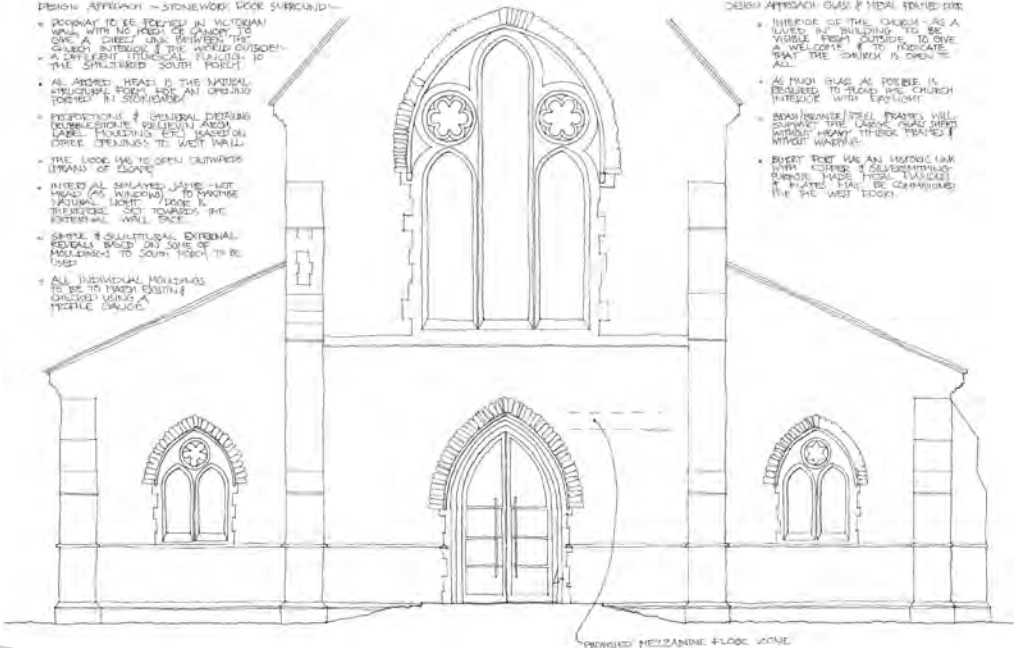


**DESIGN APPROACH - STONEWORK DOOR SURROUND -**

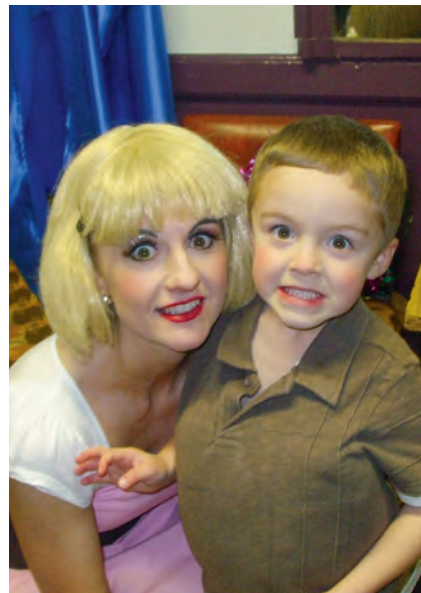
- PORCHWAY TO BE FORMED IN VICTORIAN MANNER WITH NO PORT OF CANON TO ONE SIDE - GREAT WALL BEHIND THE CHURCH INTERIOR & THE WALLS OUTSIDE - A DIFFERENT HISTORICAL FUNCTION TO THE SHALDERED SOUTH PORTAL
- AS ARCHED HEAD IS THE NATURAL STRUCTURAL POINT FOR AN OPENING TO BE IN STONEWORK
- PROPORTIONS & GENERAL DESIGN CONSIDERATIONS BELIEVED ARCH WAY - INCLUDING ETC - BEING ON THREE OPENINGS TO WEST WALL
- THE DOOR WAY TO OPEN OUTWARDS UPWARD OF DOOR
- INTERNAL WALLS SAME - BUT HEAD AS WALKING - TO FORMER 'ACTUAL' LIGHT - DOOR IS THEREFORE SET TOWARDS THE EXTERNAL WALL FACE
- SHAPE & STRUCTURAL EXTERNAL FEATURES BASED ON SOME OF FOUNDATIONS TO SOUTH PORTAL TO BE USED
- ALL INTERNAL HOLDINGS TO BE TO MATCH EXISTING CHURCH USING A HEAVY DRAUGHT

**DESIGN APPROACH GLASS & METAL FRAMEWORK**

- INTERIOR OF THE CHURCH - AS A LIVED IN BUILDING - TO BE VISIBLE FROM OUTSIDE - TO GIVE A WELCOME - AND INDICATE THAT THE CHURCH IS OPEN - ALL
- AS MUCH GLASS AS POSSIBLE IS REQUIRED - TO HELD THE CHURCH INTERIOR WITH LIGHT
- BROAD FRONTED STEEL FRAMES WILL SUPPORT THE GLASS AND WITH MINOR HEAVY THICK TRAVEL - WITHOUT WASTE
- EVERY FOOT LARK AND BURGON LARK WITH CROSS & SUBSTITUTION - BURGON MADE TICAL TRAVEL & HEAVY TRAIL - BE COMMISSIONED FOR THE WEST DOOR







The Parish of Burry Port & Pwll  
[www.stmarysburryport.org.uk](http://www.stmarysburryport.org.uk)