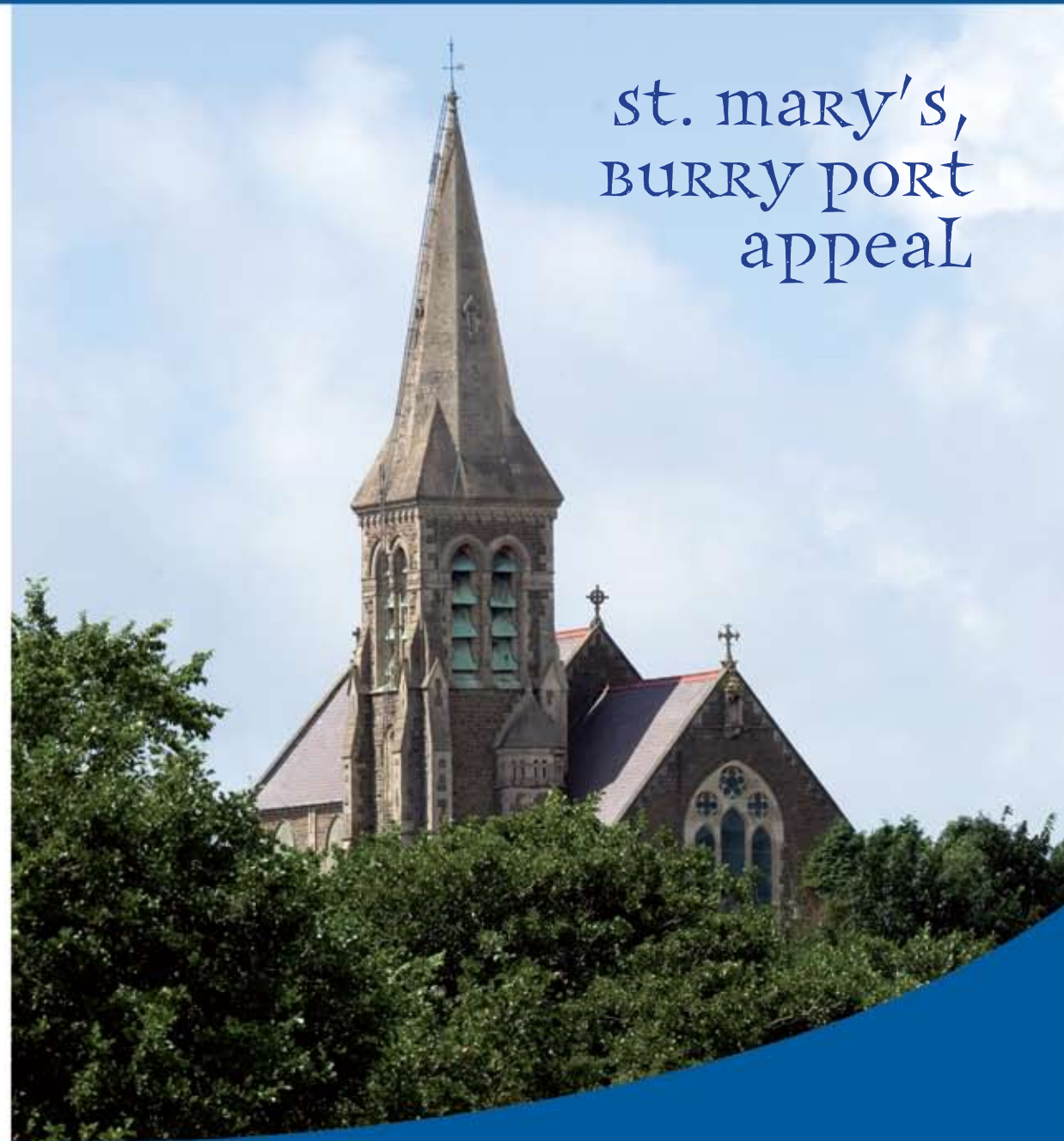
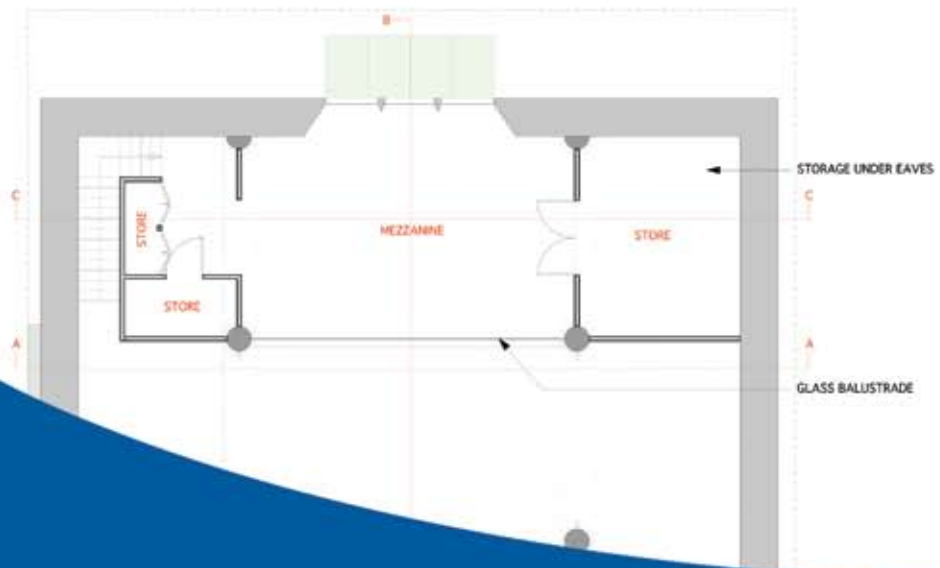
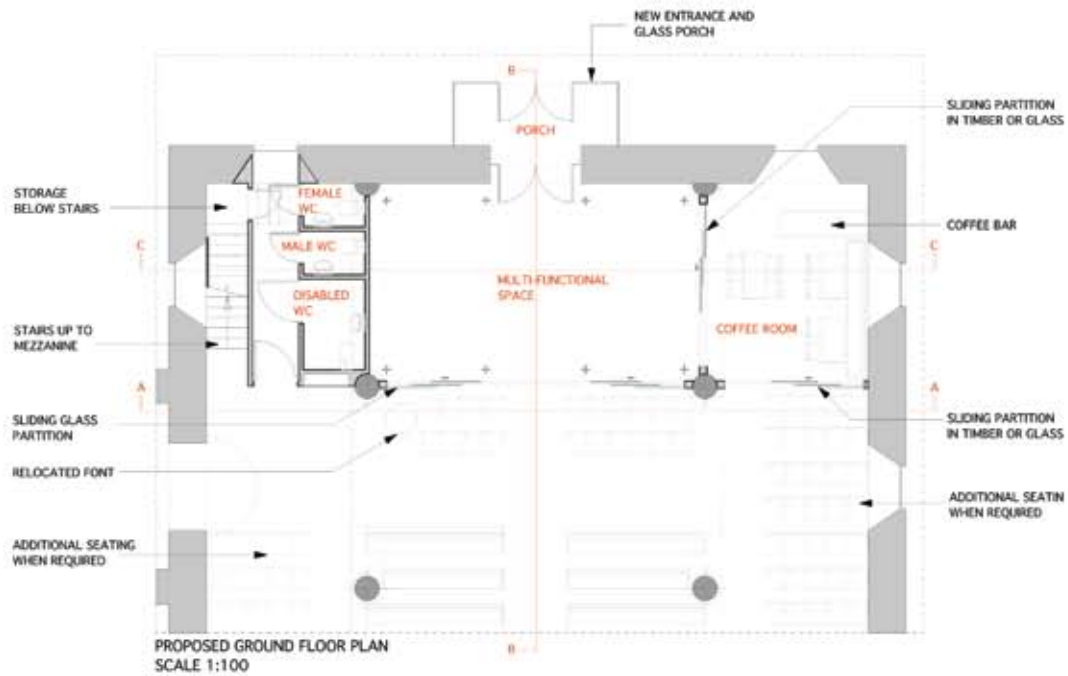


st. mary's, BURY PORT appeal



Patrons:
The Rt Hon Lord Griffiths of Fforestfach
The Revd & Rt Hon Lord Griffiths of Pembrey & Burry Port

THE THREE NEEDS



RESTORATION

£150k

- Re-slating the roof and new downpipes throughout
- Repair of stonework
- Interior redecoration
- Many smaller tasks such as repair of bells, upgrading of heating



ENDOWMENT

£200k

- Establishment of endowment fund to enable the fabric and ministry of St Mary's to be secured for the future



DEVELOPMENT

£150k

- The development of the west end of the Nave to meet the urgent requirement for toilets, meeting space and hospitality
- Better access for disabled and pushchairs etc via a separate entrance to this new facility through a new West Door.
- All completed in a design that will enhance the west end of the nave through creative use of wood and glass.



From the Revd and Rt Hon Lord Griffiths of Pembrey & Burry Port, Patron of the St Mary's Appeal

St Mary's Church was always part of my horizon as I grew up in Burry Port. I'm overjoyed at this programme of refurbishment that will make it fit for purpose for a new century. As I grow old, I'd like to think it might become part of my inner horizon, reminding me constantly of the love of God and the blessings of life.



From the Revd R Paul Davies, Vicar of Burry Port...

Now is an exciting time for Burry Port and St Mary's as it faces growth in so many ways. This appeal aims to enable St Mary's - the Parish Church of Burry Port - to be equipped and resourced to face the twenty first century and its needs with celebration, confidence and a conviction in the timeless message of the Gospel. I humbly ask you all to support it in any and every way you can.